

The Poly VVX Series telephones are compatible with Poly (formerly Plantronics) CS500 and Savi Series headsets. A Telephone Interface Cable is included with the headset for connecting the telephone; however, using this standard cable requires the end user to press the headset key on the telephone to answer and end calls. A Headset Hands-Free Adapter is available separately from POPP to enable the answering/ending of calls from the headset only.

Connecting the CS500 or Savi Series Headset to a Poly VVX Series Telephone



Pictured: CS530

With Headset Hands-Free Adapter:

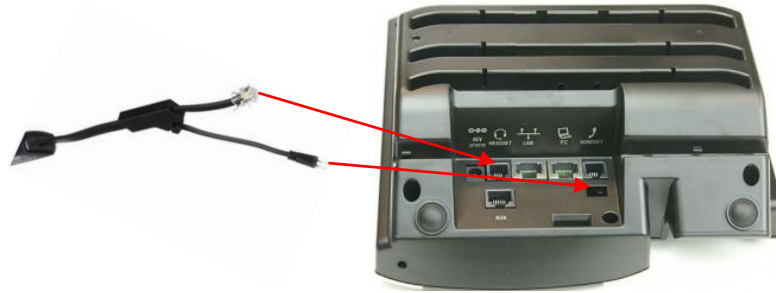
(sold separately)



1. Connect the Headset Hands-Free Adapter to the headset base unit and to the Poly telephone as shown below.



Pictured: CS530 Base Unit



Pictured: Poly VVX Series Telephone

2. **IMPORTANT: Configure the Poly telephone for the Hands-Free Adapter**
On the telephone, press the Home key, then select 'Settings' → 'Basic' → 'Preferences' → 'Headset' → 'Hookswitch Mode'. Select 'Plantronics EHS...'. When the "Reboot Phone – Are You Sure?" prompt appears – select 'Yes'.



Pictured: CS530

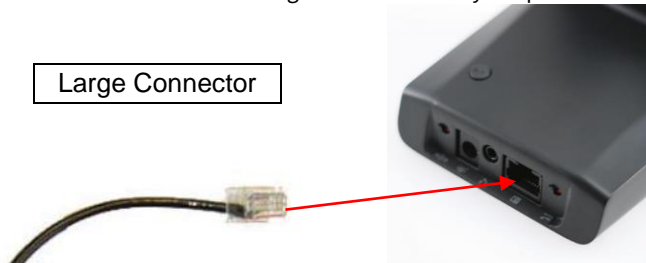
With Plantronics Telephone Interface Cable:

(included in headset box)



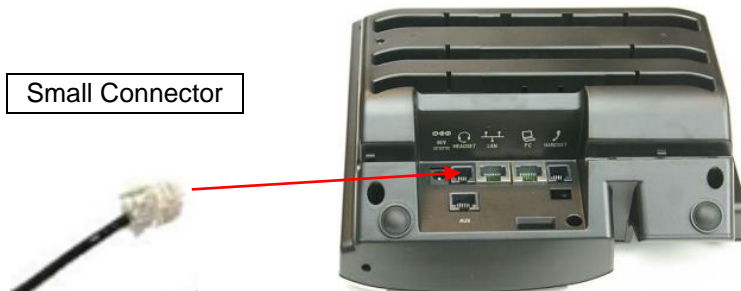
1. Connect the Telephone Interface Cable to the headset base unit and to the Poly telephone as shown below. No further configuration of the Poly telephone is necessary.

Large Connector



Pictured: CS530 Base Unit

Small Connector



Pictured: Poly VVX Series Telephone

Using the CS500 Series Headset with the Poly VVX Series Telephone



Pictured: CS530

With Headset Hands-Free Adapter:

(sold separately)



1. If using a Savi headset:
 - a. Press the power button on the headset to turn the headset on.
 - b. Verify that the LED above the computer icon on the headset base is off. If the LED is on, press the button above the computer icon to turn it off.
2. Press the Call Control button on the headset to answer or end calls. The headset plays a notification in the earpiece when an incoming call is ringing.



Pictured: CS530 Headset



Pictured: CS530

With Plantronics Telephone Interface Cable:

(included in headset box)



1. Press the Headset key on the Poly telephone to answer or end calls.



Pictured: Poly VVX Series Telephone


2. Press the Call Control button on the headset if the headset is not already powered on. To conserve battery power, press the Call Control button again when the call is finished to power off the headset.





Pictured: CS530 Headset

Enabling Headset Memory Mode


This feature is useful for end users who wear a headset full-time. You can set up your phone so that all incoming and outgoing calls use your headset. At any time, you can switch to handset or speakerphone mode.

To use Headset Memory Mode, you must enable, and then activate, Headset Memory Mode. When Headset Memory Mode is activated,  flashes green (for analog headsets).

To enable Headset Memory Mode:

1. Select **Settings** from Home view, and select **Basic > Preferences > Headset > Headset Memory**.
2. From the **Headset Memory Mode** screen, select **Enabled**.
3. Press .
4. To activate **Headset Memory Mode**, press  twice. The Headset key will flash to indicate that the phone is in Headset Memory Mode.

Now, whenever you answer a call, the call will connect to your headset automatically.

If you switch to the speakerphone or the handset, you deactivate Headset Memory Mode. Calls will no longer automatically go to your headset, unless you choose this mode. To have calls go to your headset again, activate Headset Memory Mode by pressing  twice.