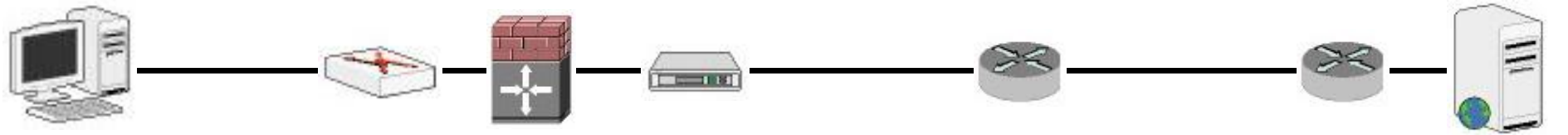


# Points of Delay on Your LAN and The Internet

Slow Internet does not mean you need more bandwidth. One of these main points may be congested.



1	2	3	4	5	6	7	8	9	10 – 15
<b>Your Computer EndPoint</b>	<b>Your LAN Cabling</b>	<b>Your LAN Switches</b>	<b>Your Firewall</b>	<b>Your Internet Router/ Modem</b>	<b>Your Internet Connection</b>	<b>Your Internet Service Provider (ISP)</b>	<b>The Public Internet</b>	<b>Content Provider's ISP</b>	<b>Content Provider's LAN</b>
<ul style="list-style-type: none"> <li>• Computer infected with malware</li> <li>• Not enough CPU/Memory/ Disk resources</li> <li>• Employee misuse of bandwidth</li> </ul>	<ul style="list-style-type: none"> <li>• Poor LAN Cabling</li> </ul>	<ul style="list-style-type: none"> <li>• Improperly configured LAN switches</li> </ul>	<ul style="list-style-type: none"> <li>• Improperly configured firewall</li> <li>• Inadequate processor/ memory resources</li> </ul>	<ul style="list-style-type: none"> <li>• Improperly configured router/modem</li> <li>• Inadequate processor/ memory resources</li> </ul>	<ul style="list-style-type: none"> <li>• Errors on copper, cable or fiber loops</li> </ul>	<ul style="list-style-type: none"> <li>• Content filtering servers used by ISP</li> <li>• Your ISP's other customers consuming large amounts of bandwidth</li> </ul>	<ul style="list-style-type: none"> <li>• Packets may take an inefficient path between Tier I and Tier II routers</li> <li>• Paths can vary based on time of day</li> <li>• Congested paths</li> </ul>	<ul style="list-style-type: none"> <li>• Content filtering servers used by ISP</li> <li>• Your Content Provider's ISP's other customers consuming large amounts of bandwidth</li> </ul>	Same as 1-6